



## Butterwick Cottage, Pickering ★★★★★

Sleeps 4



Butterwick Cottage has been converted from the original Granary buildings belonging to the Farmhouse dating back over 300 years. Fitted to an exceptionally high specification with modern kitchen/dining area and comfortable open plan

|                   |          |
|-------------------|----------|
| <b>Bedrooms</b>   | 2        |
| <b>Bathrooms</b>  | 2        |
| <b>Price Band</b> | K        |
| <b>Garden</b>     | Patio    |
| <b>Pets</b>       | Yes*     |
| <b>Parking</b>    | Off Road |
| <b>Wi-fi</b>      | Free     |
| <b>Heating</b>    | Gas      |
| <b>One Level</b>  | No       |
| <b>Fire</b>       | Gas      |
| <b>Changeover</b> | Saturday |

lounge. It benefits from both bedrooms having en-suite bathrooms and a downstairs cloakroom.

\* One medium or two small dogs only

## Accommodation

### Ground Floor

|              |   |
|--------------|---|
| Lounge:      | The contemporary lounge has dual aspect windows and a gas log effect fire, 49" LED Television with Netflix, sound system and DVD Player.  |
| Dining Area: | The light oak dining suite seats four people. There is plenty of good quality crockery, cutlery and glassware.  |
| Kitchen:     | High specification kitchen, well equipped with integrated dishwasher, washing machine, fridge/freezer, double oven and hob. It also has a microwave, toaster, kettle and coffee maker. There is a good range of cooking utensils. |
| Cloakroom:   | Toilet with hand basin.   |

### First Floor

|            |   |
|------------|---|
| Bedroom 1: | A spacious room with the bed available as either super king-size or twin. Luxury linen and light oak furnishings. This room will accommodate a cot. |
| Ensuite 1: | Large shower enclosure with thermostatically controlled shower, wash basin, and W/C.  |
| Bedroom 2: | Good size room with the bed available as either super king-size or twin. Luxury linen and light oak furnishings. This room will accommodate a cot.  |
| Ensuite 2: | High specification bath with thermostatically controlled filler and shower over, wash basin and W/C.  |

### Outside

|          |   |
|----------|---|
| Garden:  | Small enclosed garden.  |
| Patio:   | Enclosed patio with table, chairs, and sun umbrella. A BBQ is available.                                |
| Parking: | The cottage is in a private courtyard shared with twelve other cottages. Off-road parking is available. |

### Restrictions

|       |   |
|-------|---|
| Dogs: | One medium or two small dogs are accepted without additional charge. Please call if you are unsure. |
|-------|---|





## Local Information

|  |   |
|--|---|
| <b>Shops:</b>                            | Local shop 2 minutes walk.  |
| <b>Nearest Town:</b>                     | Pickering town centre is 5 minutes walk, has extensive shopping including a small supermarket (Market day is Monday).   |
| <b>Public Transport:</b>                 | Pickering is well served by bus routes, there is a bus stop within 100 yards of the cottage, we are happy to meet you and help with the luggage. Nearest rail station is in Malton 10 miles from Pickering.   |
| <b>Eating Out:</b>                       | Pickering has many restaurants and takeaways most within easy walk of the cottages. There is a file in the cottage with sample menus for many local restaurants.  |
| <b>Places to visit and things to do:</b> | We are within walking distance of the North Yorkshire Moors steam railway, Pickering Castle, Beck Isle Museum and the swimming pool. Pickering is on the edge of the North Yorkshire National Park, fantastic for walking or site seeing. Whitby and Scarborough on the coast are within an easy drive as is Castle Howard and a host of other historic properties. |

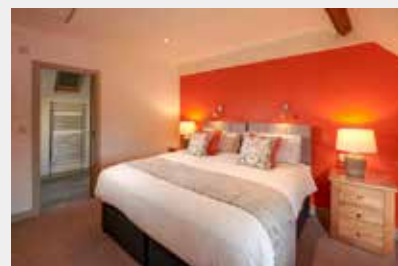
## Facilities

|                             |  |   |   |
|-----------------------------|--|---|---|
| <b>Linen:</b>               | Luxury duvets, pillows, bed linen, and towels; bath sheet and hand towels plus kitchen linen are provided. Blankets available on request.  |   |   |
| <b>Fuel:</b>                | Price includes electric, gas central heating, and hot water. Heating and hot water is controllable in the cottage.   |   |   |
| <b>Kitchen Equipment:</b>   | Oven and Hob<br>Fridge/Freezer<br>Denby Crockery<br>Dolce Gusto Coffee Maker   | Microwave<br>Toaster<br>Cutlery<br>Utensils | Electric Kettle<br>Dishwasher<br>Saucepans<br>Washing Machine |
| <b>Electronic:</b>          | 49" LED TV with Netflix<br>Sound System  | DVD Player                                  | Wi-fi enabled   |
| <b>Visitor Information:</b> | Welcome file with an A-Z of useful information as well as a comprehensive tourist information folder with suggested itinerary, walks, events and places to visit plus an eating out guide.   |   |   |
| <b>Extras:</b>              | All available on request:<br>Cot Yes Highchair Yes<br>Stair-gate Yes Daily Cleaning £20<br>Accessibility Equipment Yes Wheelchair Yes  |   |   |
| <b>Office:</b>              | Our office in Pickering is open 9am-1pm Monday to Saturday for enquiries and information.  |   |   |
| <b>Laundry:</b>             | Iron and ironing board provided in the cottage. Clothes airer available on request.<br>Tumble dryer in the on-site laundry room.   |   |   |
| <b>Cleaning Equipment:</b>  | Cleaning material and equipment, including a vacuum cleaner, are available in the cottage.   |   |   |
| <b>Other Items:</b>         | Hairdryer<br>Radio Alarm Clock   | Books and games                             | Shaver Point  |
| <b>Welcome:</b>             | All guests are greeted on arrival with a site and cottage orientation. A complimentary tea and coffee tray is supplied with fresh milk. The cottage is thoroughly cleaned prior to your arrival. The normal arrival time is 2pm although you are welcome to arrive earlier and park up on site. Departure time is normally 10am on the day of departure. |   |   |

## Weekly Prices 2019

| From                 | To                     | Per Week |
|----------------------|------------------------|----------|
| 4 <sup>th</sup> Jan  | - 14 <sup>th</sup> Feb | £460.00  |
| 15 <sup>th</sup> Feb | - 14 <sup>th</sup> Mar | £545.00  |
| 15 <sup>th</sup> Mar | - 4 <sup>th</sup> Apr  | £580.00  |
| 5 <sup>th</sup> Apr  | - 25 <sup>th</sup> Apr | £665.00  |
| 26 <sup>th</sup> Apr | - 23 <sup>rd</sup> May | £635.00  |
| 24 <sup>th</sup> May | - 30 <sup>th</sup> May | £820.00  |
| 31 <sup>st</sup> May | - 20 <sup>th</sup> Jun | £725.00  |
| 21 <sup>st</sup> Jun | - 4 <sup>th</sup> Jul  | £725.00  |
| 5 <sup>th</sup> Jul  | - 18 <sup>th</sup> Jul | £765.00  |
| 19 <sup>th</sup> Jul | - 22 <sup>nd</sup> Aug | £815.00  |
| 23 <sup>rd</sup> Aug | - 29 <sup>th</sup> Aug | £725.00  |
| 30 <sup>th</sup> Aug | - 19 <sup>th</sup> Sep | £675.00  |
| 20 <sup>th</sup> Sep | - 3 <sup>rd</sup> Oct  | £625.00  |
| 4 <sup>th</sup> Oct  | - 24 <sup>th</sup> Oct | £725.00  |
| 25 <sup>th</sup> Oct | - 15 <sup>th</sup> Dec | £565.00  |
| 16 <sup>th</sup> Dec | - 3 <sup>rd</sup> Jan  | £805.00  |
| 4 <sup>th</sup> Jan  | - 6 <sup>th</sup> Feb  | £465.00  |

3 & 4 night breaks or 3 & 4 night extensions available all year.  
Minimum stay 7 nights during peak season.  
Tuesday changeover available.



Availability and to book online visit [www.eastgatecottages.co.uk](http://www.eastgatecottages.co.uk) or call us on 01751 471310