



Readman Cottage, Pickering ★★★★★

Sleeps 3 + 1



This two bedroom character red brick cottage has been refurbished to a high standard. With two bathrooms, this cottage is ideal for a couple, two singles travelling together or a small family.

It is located just off an attractive tree lined road of old Yorkshire stone buildings less than 5 minutes walk from the town centre.

Bedrooms	2
Bathrooms	2
Price Band	C
Garden	Patio
Pets	Yes*
Parking	Off Road
Wi-fi	Free
Heating	Gas
One Level	No
Fire	Gas
Changeover	Friday

* One medium or two small dogs only

Accommodation

Ground Floor

- Lounge:** Small cosy lounge has a three seater sofa set around a gas real fire effect log burning stove. 43" LED TV, DVD recorder and Hi-Fi.
- Kitchen/diner:** Electric oven & hob, fridge, dishwasher, washer/dryer. Full range of crockery, cooking pans and utensils.
- Dining Area:** The dining area is furnished with a pine table and four chairs,

First Floor

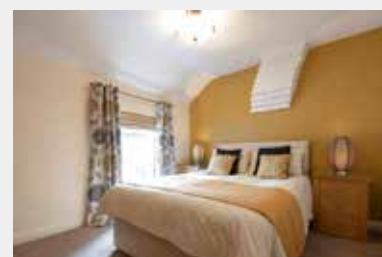
- Bedroom 1:** A pretty double room with king size bed and light oak furniture.
- Bathroom:** Bath with thermostatically controlled shower over, glass bath screen, washbasin and W/C
- Bedroom 2:** The single bed is a good quality guest bed which can be extended to provide a second full size single bed. It does fill the room, so best suited to 2 children or an overnight visitor. Will accommodate a cot if pull out bed is not used.
- En-suite:** The shower room is integral. The quadrant shower has a thermostatically controlled power shower, washbasin and W.C.

Outside

- Garden:** None
- Patio:** Integral walled private patio with table and four chairs. It is accessed from the kitchen.
- Parking:** Cottage has an adjacent, wide but short, garage although access is a little tight for nervous drivers or large cars. Plenty of space for bicycles. Off road parking is available across the road in our courtyard. .
- Note:** This property is situated in a residential courtyard.

Restrictions

- Dogs:** One medium or two small dogs are accepted without additional charge. Please call if you are unsure.





Local Information

Shops:	Local shop 2 minutes walk.
Nearest Town:	Pickering town centre is 5 minutes walk, has extensive shopping including a small supermarket (Market day is Monday).
Public Transport:	Pickering is well served by bus routes, there is a bus stop within 100 yards of the cottage, we are happy to meet you and help with the luggage. Nearest rail station is in Malton 10 miles from Pickering.
Eating Out:	Pickering has many restaurants and takeaways most within easy walk of the cottages. We have a file with sample menus for many local restaurants.
Places to visit and things to do:	We are within walking distance of the North Yorkshire Moors steam railway, Pickering Castle, Beck Isle Museum and the swimming pool. Pickering is on the edge of the North Yorkshire National Park, fantastic for walking or site seeing. Whitby and Scarborough on the coast are within an easy drive as is Castle Howard and a host of other historic properties.

Weekly Prices 2019

From	To	Per Week
4 th Jan	- 14 th Feb	£380.00
15 th Feb	- 14 th Mar	£420.00
15 th Mar	- 4 th Apr	£420.00
5 th Apr	- 25 th Apr	£480.00
26 th Apr	- 23 rd May	£500.00
24 th May	- 30 th May	£560.00
31 st May	- 20 th Jun	£545.00
21 st Jun	- 4 th Jul	£565.00
5 th Jul	- 18 th Jul	£560.00
19 th Jul	- 22 nd Aug	£565.00
23 rd Aug	- 29 th Aug	£515.00
30 th Aug	- 19 th Sep	£490.00
20 th Sep	- 3 rd Oct	£470.00
4 th Oct	- 24 th Oct	£510.00
25 th Oct	- 15 th Dec	£405.00
16 th Dec	- 3 rd Jan	£510.00
4 th Jan	- 6 th Feb	£380.00

3 & 4 night breaks or 3 & 4 night extensions available all year.

Minimum stay 7 nights during peak season. Monday changeover available.

Facilities

Linen:	Luxury duvets, pillows, bed linen, and towels; bath sheet and hand towels plus kitchen linen are provided. Blankets available on request.		
Fuel:	Price includes electric, gas central heating, and hot water. Heating and hot water is controllable in the cottage.		
Kitchen Equipment:	Electric Oven/Hob	Washer/Dryer	Microwave
	Electric Kettle	Fridge	Dishwasher
	Denby crockery	Cutlery	Saucepans
	Utensils	Toaster	
Electronic	43" LED TV with Netflix	DVD Recorder	Wi-fi enabled
	Hifi with CD and radio		
Visitor Information:	Welcome file with an A-Z of useful information as well as a comprehensive tourist information folder with suggested itinerary, walks, events and places to visit plus an eating out guide.		
Extras:	All available on request:		
	Cot	Yes	Highchair Yes
	Stair-gate	Yes	Daily Cleaning £15
	Accessibility Equipment	Yes	Wheelchair Yes
Office:	Our office in Pickering is open 9am-1pm Monday to Saturday for enquiries and information.		
Laundry:	Washing machine with tumble dryer in the kitchen. Clothes airer, iron and ironing board available.		
Cleaning Equipment:	Cleaning material and equipment, including a vacuum cleaner, are available in the cottage.		
Other Items:	Hairdryer	Books and games	Shaver Point
	Radio Alarm Clock		
Welcome:	All guests are greeted on arrival with a site and cottage orientation. A complimentary tea and coffee tray is supplied with fresh milk. The cottage is thoroughly cleaned prior to your arrival. The normal arrival time is 2pm although you are welcome to arrive earlier and park up on site. Departure time is normally 10am on the day of departure.		



Availability and to book online visit www.eastgatecottages.co.uk or call us on 01751 471310